

Design portfolio

Jesus E Morales M

Boston MA

project: Graph festival  
2023-On going



invasion/belonging  
We are stronger together.

This is a ceremonial event that brings nature, culture and ancient, contemporary through living forms. We invite people to connect with nature, learn about rituals and climate solutions to restore and enrich our communities.

#### Research and development

In my work in connecting people to nature I do lots of research on indigenous art and ancient technologies. I had the opportunity to host a ritual gathering with a climate resilient group. And I thought of how ancient civilizations did rituals for everyday practices and work developing a relationship with mother nature. Implemented spiritual knowledge of Quechua people to the modern sciences of today. Through an initiation of art, sound, and food. When discovering The emerald tutu project I have gained a sense of meaning when working with invasive plant called phragmites how to repurpose a plant than eliminating completely and be used to create a living infrastructure.

Partners:The Emerald Tutu

project: Mama sauna  
2025-On going



Sharing  
intergenerational  
stories

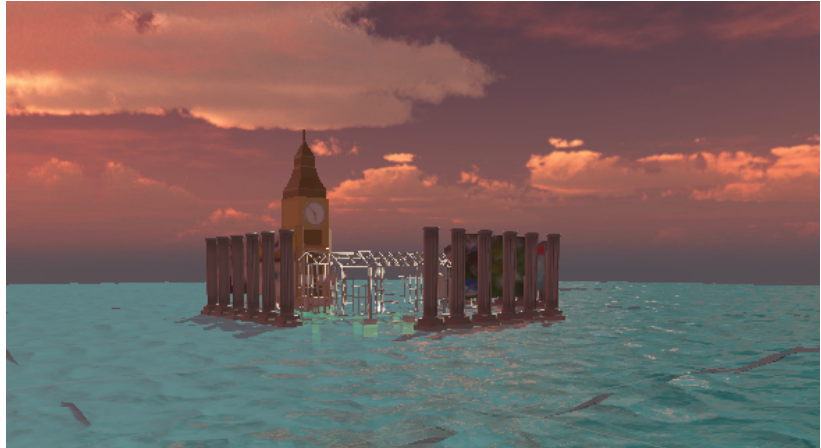
This is an intervention where we ask people to share their stories and what does care look like to them. We invite people to step into a sauna, participate in avant guard practices and slow down to listen to ones own body.

Research and development:

our design team have had the idea to bring saunas to the city. We wanted to see if it would be beneficial for people to go to a hot steamy place so did some research to what already exist. We reached out to the local Dudley green house and went to learn about how it works the community involved and the amount of space and energy to build and maintain a green house. Furthermore, we also went to actual saunas nearby and saw a need for people to open up and talk to one another. The insight we found was what we were looking for already exist and wanted to replicate the green house into a sauna with a pop-up installation.

Partners: DS4SI, Noehemi, Henri, Pau, Erdene

Project: Geo greeny  
2023-Ongoing



How do we make what's invisible to the naked eye visible? This virtual reality world of the geo thermal green house shows how big it really is! By seeing through the water, the well pipes bringing heat way down below our feet. There is quite a lot of technology and features this green house has, but this is a virtual environment experience includes.  
art from Brian Bruke.

Research and development:

Did some reading about the green house and how it came to be. From reading HEAT book from MIT press an insight I found is the unique perspectives when you put yourself into the view point of an ant. So I wanted to highlight the life under our feet and have a monument dedicated to ants and arthropods species.  
Developed with meta oculus headset and unity game engine.

Partners: Eastie Farms, Brian Bruke